

CROFT, LLC

SERIES 4400/4440 SINGLE HUNG WINDOW

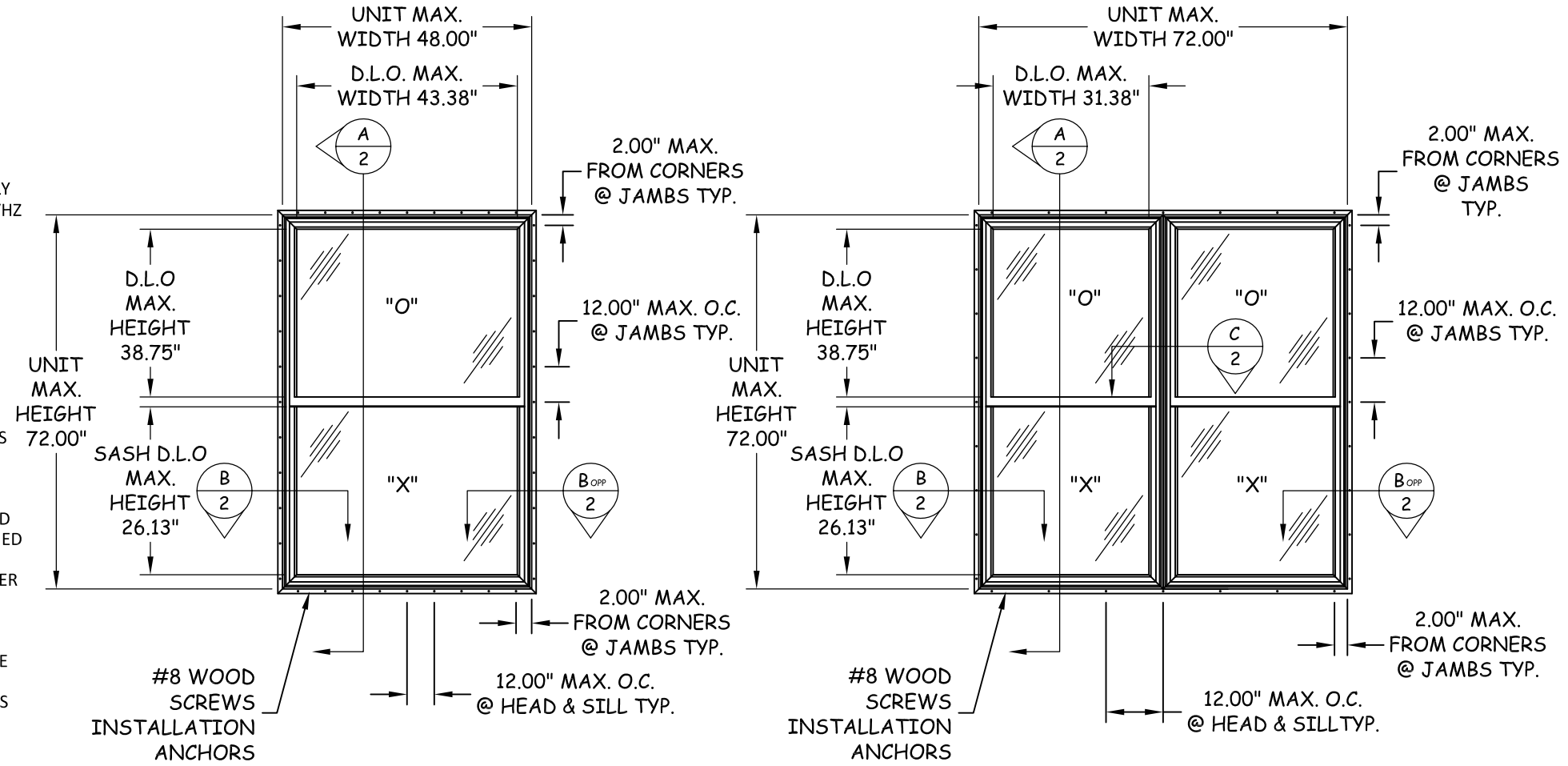


INSTALLATION NOTES:

1. SHIM AS REQUIRED AT EACH INSTALLATION ANCHOR WITH LOAD BEARING SHIM(S). MAXIMUM ALLOWABLE SHIM STACK TO BE 1/4 INCH. SHIM WHERE SPACE OF 1/16 INCH OR GREATER OCCURS. SHIM(S) SHALL BE CONSTRUCTED OF HIGH DENSITY PLASTIC OR BETTER.
2. MINIMUM EMBEDMENT AND EDGE DISTANCE EXCLUDE WALL FINISHES, INCLUDING BUT NOT LIMITED TO STUCCO, FOAM, BRICK VENEER, AND SIDING.
3. INSTALLATION ANCHORS AND ASSOCIATED HARDWARE MUST BE MADE OF CORROSION RESISTANT MATERIAL OR HAVE A CORROSION RESISTANT COATING.
4. INSTALLATION ANCHORS SHALL BE INSTALLED IN ACCORDANCE WITH ANCHOR MANUFACTURER'S INSTALLATION INSTRUCTIONS, AND ANCHORS SHALL NOT BE USED IN SUBSTRATES WITH STRENGTHS LESS THAN THE MINIMUM STRENGTH SPECIFIED BY THE ANCHOR MANUFACTURER.
5. INSTALLATION ANCHOR CAPACITIES FOR PRODUCTS HEREIN ARE BASED ON SUBSTRATE MATERIALS WITH THE FOLLOWING PROPERTIES:
 - A. WOOD - MINIMUM SPECIFIC GRAVITY OF 0.55.

GENERAL NOTES:

1. THE PRODUCT SHOWN HEREIN IS DESIGNED AND MANUFACTURED TO COMPLY WITH THE 5TH EDITION (2014) FLORIDA BUILDING CODE (FBC), EXCLUDING HVHZ AND HAS BEEN EVALUATED ACCORDING TO THE FOLLOWING:
 - AAMA/WDMA/CSA 101/I.S.2/A440-08
2. ADEQUACY OF THE EXISTING STRUCTURAL CONCRETE/MASONRY AND 2X FRAMING AS A MAIN WIND FORCE RESISTING SYSTEM CAPABLE OF WITHSTANDING AND TRANSFERRING APPLIED PRODUCT LOADS TO THE FOUNDATION IS THE RESPONSIBILITY OF THE ENGINEER OR ARCHITECT OF RECORD FOR THE PROJECT OF INSTALLATION.
3. 2X BUCKS (WHEN USED) SHALL BE DESIGNED AND ANCHORED TO PROPERLY TRANSFER ALL LOADS TO THE STRUCTURE. BUCK DESIGN AND INSTALLATION IS THE RESPONSIBILITY OF THE ENGINEER OR ARCHITECT OF RECORD FOR THE PROJECT OF INSTALLATION.
4. 2X WOOD STUDS SHALL BE ATTACHED TO FULL LENGTH OF FRAME WHEN USED INSIDE METAL FRAMING AS STIFFENERS. WOOD STIFFENERS SHALL BE DESIGNED AND ANCHORED TO PROPERLY TRANSFER ALL LOADS TO THE STRUCTURE. STIFFENER DESIGN AND INSTALLATION IS THE RESPONSIBILITY OF THE ENGINEER OR ARCHITECT OF RECORD FOR THE PROJECT OF INSTALLATION.
5. THE INSTALLATION DETAILS DESCRIBED HEREIN ARE GENERIC AND MAY NOT REFLECT ACTUAL CONDITIONS FOR A SPECIFIC SITE. IF SITE CONDITIONS CAUSE INSTALLATION TO DEVIATE FROM THE REQUIREMENTS DETAILED HEREIN, A LICENSED ENGINEER OR ARCHITECT SHALL PREPARE SITE SPECIFIC DOCUMENTS FOR USE WITH THIS DOCUMENT.
6. APPROVED IMPACT PROTECTIVE SYSTEM **IS REQUIRED** TO PROTECT THIS PRODUCT IN AREAS REQUIRING IMPACT RESISTANCE.
7. WINDOW FRAME MATERIAL: THERMALLY BROKEN ALUMINUM 6063-T5
8. GLASS SHALL MEET ASTM E 1300-04 GLASS CHART REQUIREMENTS.
9. DESIGNATIONS "X" AND "O" STAND FOR THE FOLLOWING:
 - X: OPERABLE PANEL
 - O: FIXED PANEL



ELEVATION

ELEVATION

DESIGN PRESSURE RATING
+/- 50.0 PSF

TITLE: **SERIES 4400/4440 SH WINDOW**

NOTES AND ELEVATION

PREPARED FOR:
 CROFT, LLC
 P.O. BOX 826
 MCCOMBS, MS. 39649
 PH: 601.684.6121 FX: 601.783.3188

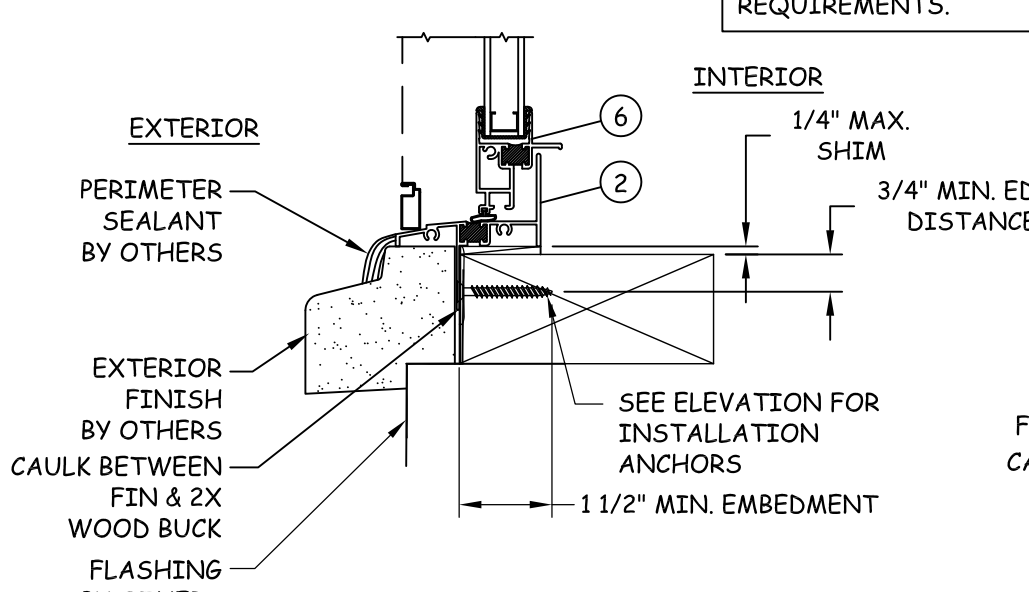
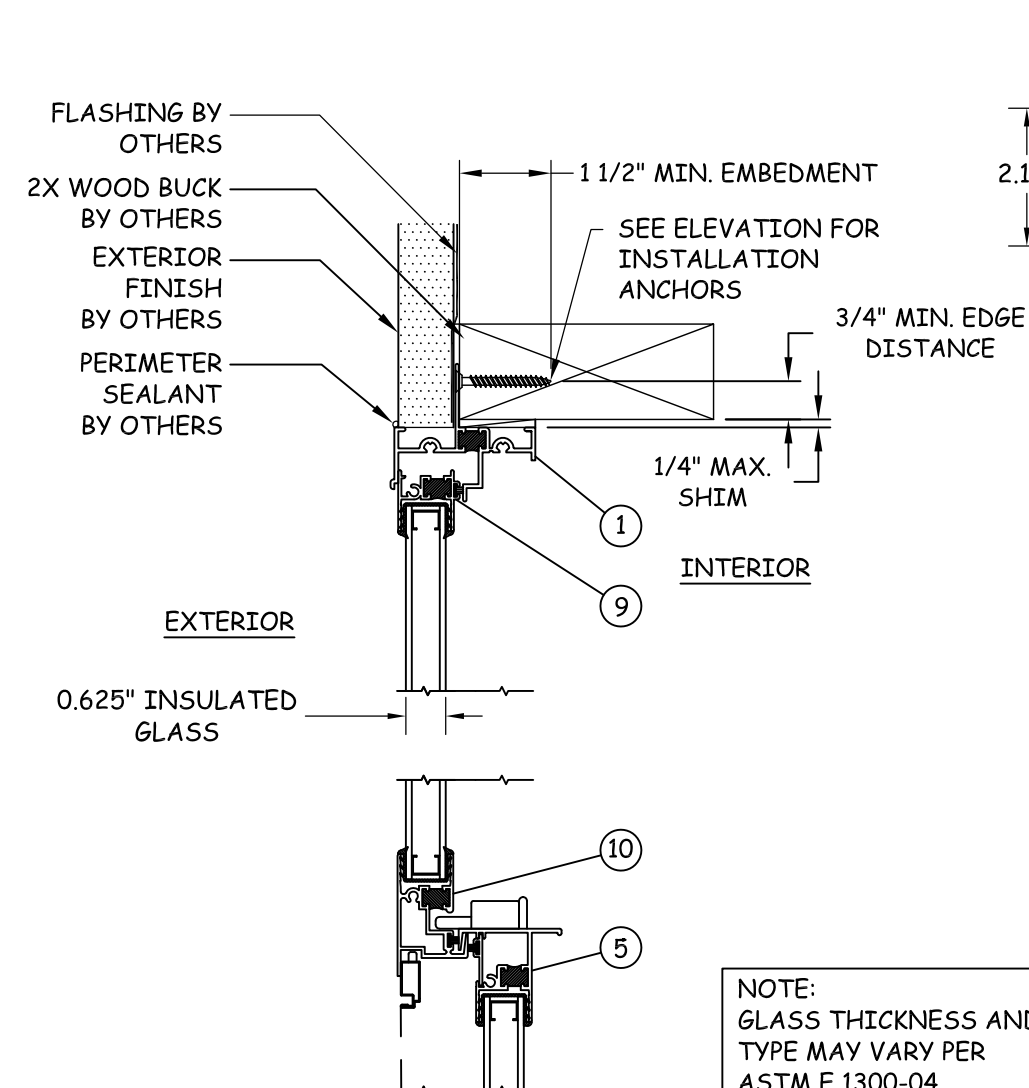
REVISIONS

NO.	DESCRIPTION	BY	DATE
A	UPDATED TO 2010 FBC	MTJ	05.10.13
B	UPDATED TO 5TH EDITION FBC	AM	10.27.16

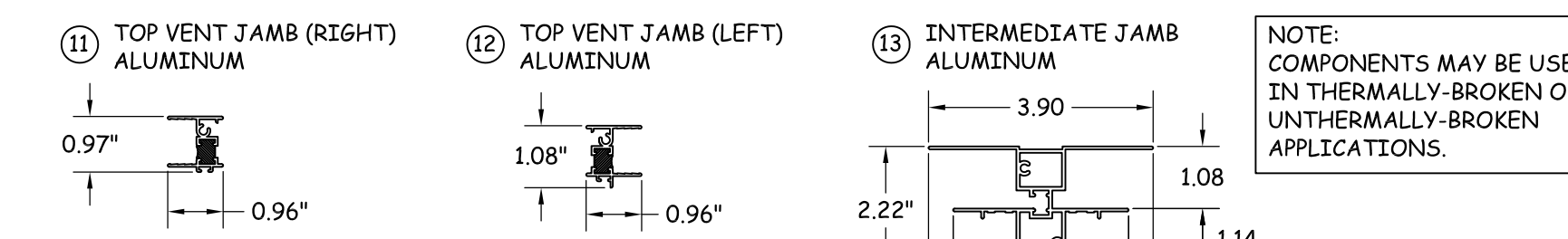
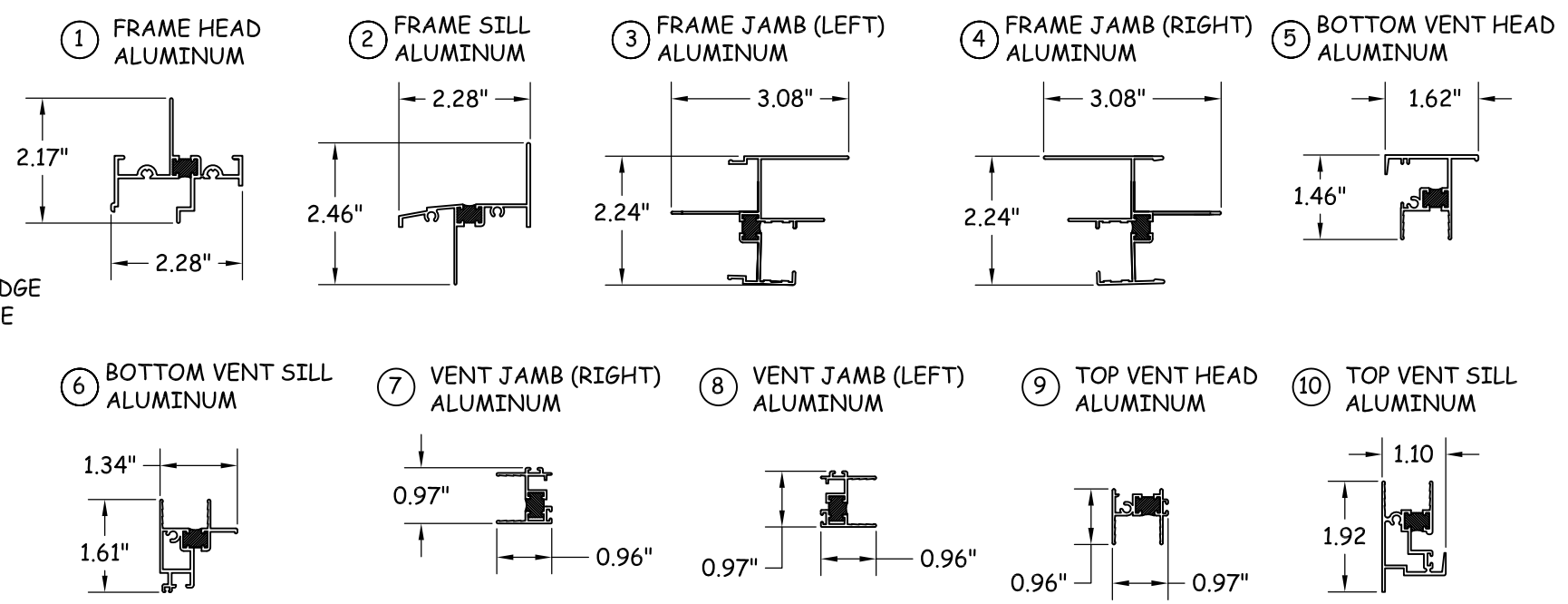
DATE:	05.05.09
DWN BY:	JLR
CHK BY:	HFN
SCALE:	NTS

DWG #: **CRF007**
 SHEET: **1 OF 2**

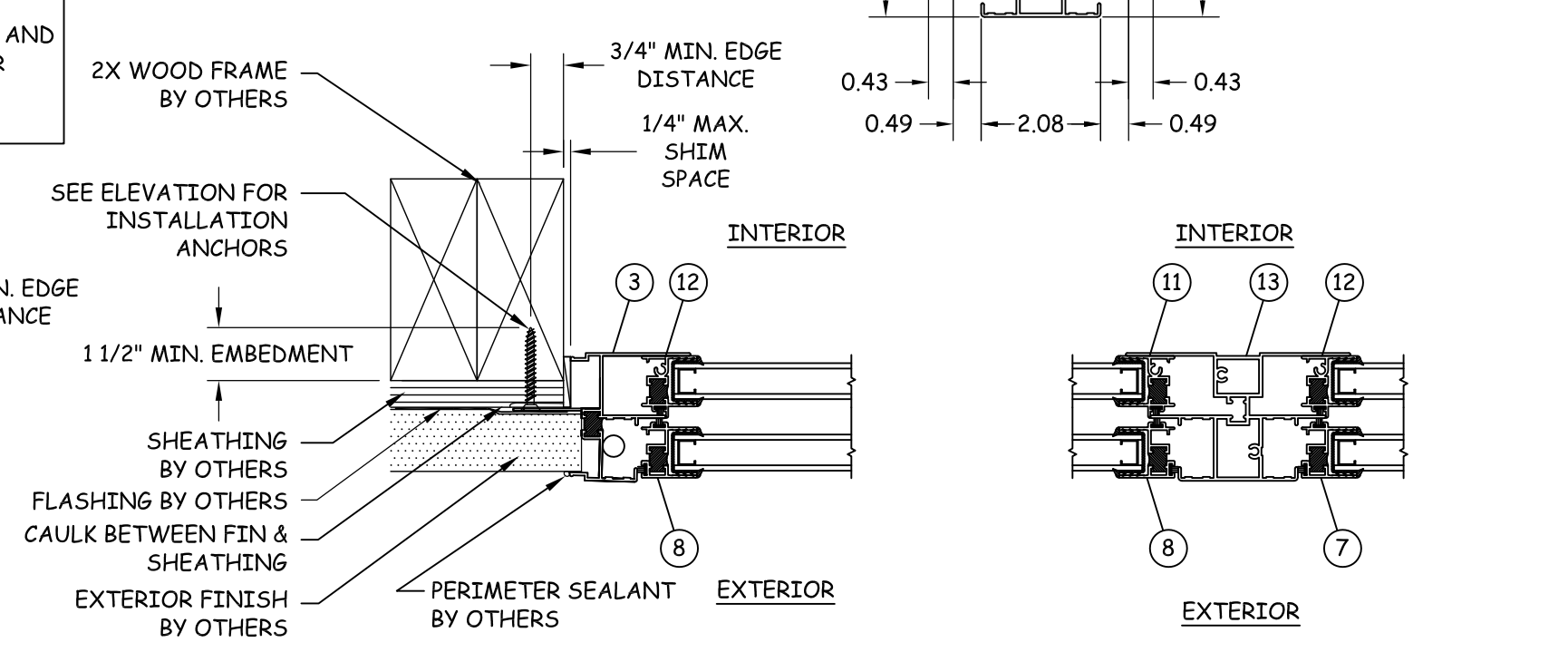
4/21/2009 9:06 AM s:\projects\croft\l1c\fb-16-1036 editorial revision - 4400 series\dwg\crf007 series 4400 sh.dwg



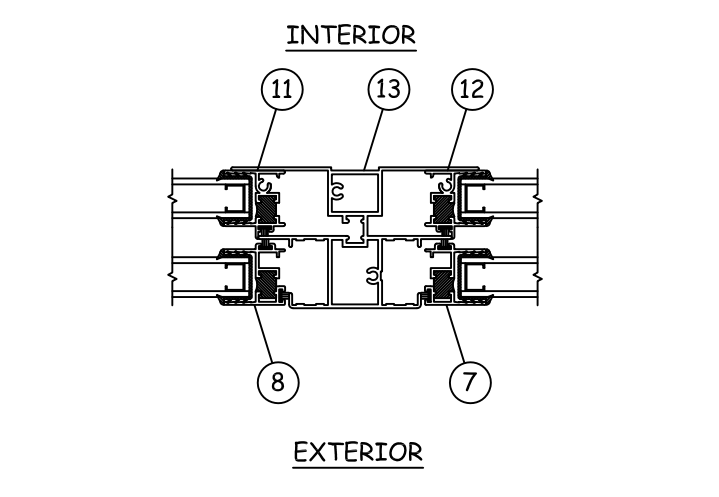
A
2 **VERTICAL SECTION**
FIN INSTALLATION



NOTE:
COMPONENTS MAY BE USED
IN THERMALLY-BROKEN OR
UNTHERMALLY-BROKEN
APPLICATIONS.



B
2 **HORIZONTAL SECTION**
FIN INSTALLATION



C
2 **INTERMEDIATE JAMB**

TITLE:
SERIES 4400/4440 SH WINDOW

SECTIONS AND COMPONENTS

PREPARED FOR:
CROFT, LLC
P.O. BOX 826
MCCOMBS, MS. 39649
PH: 601.684.6121 FX: 601.783.3188

REVISIONS		NO.	DESCRIPTION	BY	DATE
A	UPDATED TO 2010 FBC			MTJ	05.10.13
B	UPDATED TO 5TH EDITION FBC			AM	10.27.16

DATE:	05.05.09
DWN BY:	JLR
CHK BY:	HN
SCALE:	NTS

DWG #:
CRF007
SHEET: **2 OF 2**